



**PARTS FOR
X-WEDGE® ENGINES**



| | |
|---------------------------|----|
| Air Cleaners..... | 3 |
| Belt Cover | 6 |
| Camshafts..... | 9 |
| Crankcases | 5 |
| Crankshaft | 5 |
| Cylinders & Pistons | 7 |
| Cylinder Heads..... | 11 |
| Fuel Pump | 13 |
| Oil Pump | 6 |
| Pushrods | 10 |
| Rocker Covers | 12 |
| Tappets | 10 |
| Valve Springs..... | 10 |

STEALTH AIR CLEANER KITS

- Air directional stinger cone
- Can be used with any of several S&S designed covers
- Pre-filters and high flow (1" taller) filter kit available — *See below*

STEALTH AIR CLEANER KIT

170-0200 (No Cover) | \$262.95

HIGH FLOW AIR FILTER KIT (includes spacers), 1" Taller

170-0127 | \$71.95

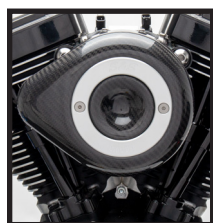
DISCLAIMER: NOT LEGAL FOR SALE OR USE IN CALIFORNIA ON ANY POLLUTION CONTROLLED MOTOR VEHICLE. Not legal for sale or use on any EPA pollution controlled motor vehicle.

FILTER REPLACEMENTS

| | | | |
|-----------------------|--------------------|------------------|---------|
| Standard Filter Only | Stealth | 170-0126 | \$42.95 |
| 1" Taller Filter Only | Stealth | 170-0154 | \$46.95 |
| Spacer | Stealth, 1" Taller | 50-5009-S | \$13.95 |



STEALTH AIR CLEANER KIT COVERS



Carbon Fiber



Mini in Chrome



Mini in Gloss Black



Tri-Spoke



Torker



Air 1



Airstream in Chrome



Airstream in Gloss Black



Muscle in Chrome



Muscle in Gloss Black



Bobber-dished

| CARBON FIBER | MINI | | TRI-SPOKE | TORKER | AIR 1 |
|-----------------|-----------------------------|-----------------|--------------------------|--------------------------|--------------------------|
| Black | Chrome | Gloss Black | Gloss Black w/Highlights | Gloss Black w/Highlights | Gloss Black w/Highlights |
| 170-0501 | 170-0367[±] | 170-0366 | 170-0210 | 170-0206 | 170-0214 |
| \$299.95 | \$167.95 | \$167.95 | \$157.95 | \$157.95 | \$157.95 |

| AIRSTREAM | | MUSCLE | | BOBBER-DISHED | | BOBBER-DOMED | |
|-----------------------------|-----------------|-----------------------------|-----------------------------------|-----------------------------|-----------------|-----------------------------|-----------------|
| Chrome | Gloss Black | Chrome | Gloss Black with Highlighted Logo | Chrome | Wrinkle Black | Chrome | Wrinkle Black |
| 170-0118[±] | 170-0396 | 170-0121[±] | 170-0463 | 170-0119[±] | 170-0123 | 170-0120[±] | 170-0124 |
| \$157.95 | \$157.95 | \$178.95 | \$178.95 | \$125.95 | \$125.95 | \$125.95 | \$125.95 |

[±] WARNING: Cancer and Reproductive Harm — www.P65Warnings.ca.gov



PRE-FILTERS

- Water resistant
- Prevents large debris from prematurely clogging filter
- Washable nylon
- Promotes longer filter life
- Reduces the risk of water entering air intake system

| | | |
|-----------|-----------------|---------|
| Standard | 170-0193 | \$41.95 |
| 1" Taller | 170-0197 | \$41.95 |

SINGLE BORE TUNED INDUCTION SYSTEM

- Bolt-on performance—over twice the filtering area over stock intake system
- Increases horsepower and torque across the rpm range using air column inertia and carefully timed gas dynamic pressure waves
- Smooth intake tract of carefully selected tuned lengths increases performance
- High flow washable and reusable cotton media provides performance, protection, and economy



| Fitment | Fuel Delivery | Finish | Part # | MSRP |
|------------|---------------|---------|-----------------|------------------|
| CTO | Specify | Specify | 106-5337 | Call for Pricing |

DISCLAIMER: NOT LEGAL FOR SALE OR USE IN CALIFORNIA ON ANY POLLUTION CONTROLLED MOTOR VEHICLE. Not legal for sale or use on any EPA pollution controlled motor vehicle.

REPLACEMENT PARTS: SEE PAGE 18

AIR FILTER COVERS

- Water resistant and filters out large debris, allowing the filter media to stop small dirt particles from getting into your engine
- Washable nylon

HIGH FLOW REPLACEMENT FILTER

- High flow washable and reusable cotton media provides performance, protection, and economy
- Choice of red or blue—red filters come standard with all S&S Single Bore Tuned Induction kits
- Kit includes one filter and one clamp

AIR FILTER OIL

- Use after cleaning the cotton media — brings back the vibrance of your filter
- Designed for S&S air filters and is available in red or blue



ACCESSORIES

| Description | | Part # | MSRP |
|-----------------------------------|--------|-----------------|---------|
| Air Filter (each sold with clamp) | Red | 17-1020 | \$57.95 |
| | Blue | 17-1023 | \$57.95 |
| Air Filter Oil, 8 oz. Bottle | Red | 106-1163 | \$30.95 |
| | Blue | 106-1164 | \$30.95 |
| Nylon Air Filter Cover | each | 106-0247 | \$48.95 |
| | 2 pack | 106-0248 | \$96.95 |



CRANKCASES

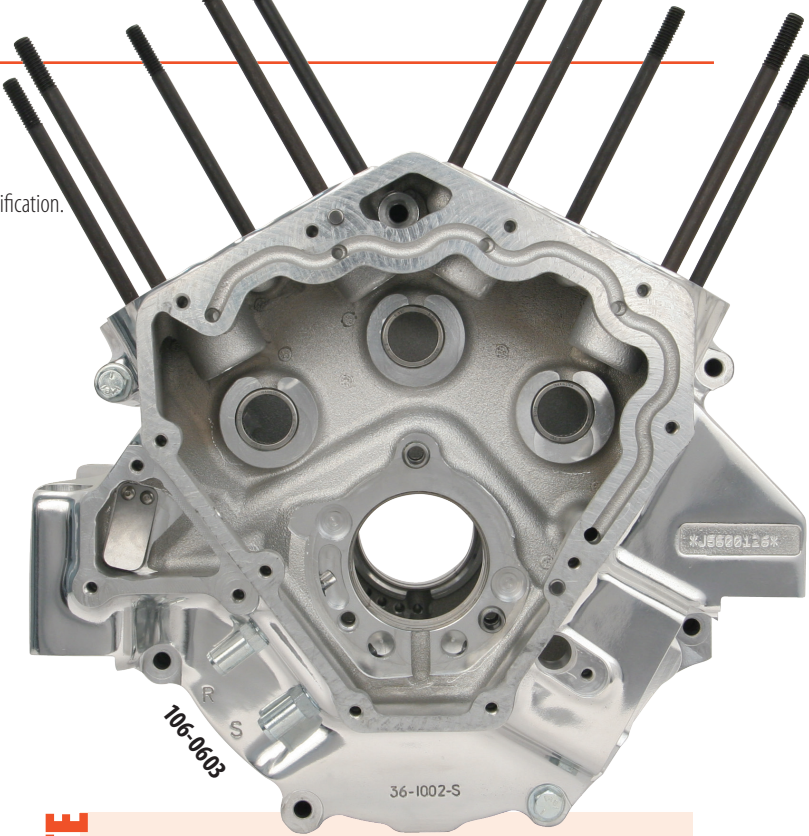
- Cylinder deck height of 6.125" and will accommodate 4⅜" up to 4¾" bore cylinders without modification.
- Silver powder coat, wrinkle black (WBlack) powder coat, or polished finish

KIT CONTENTS

- S&S crankcase, hardware, seals

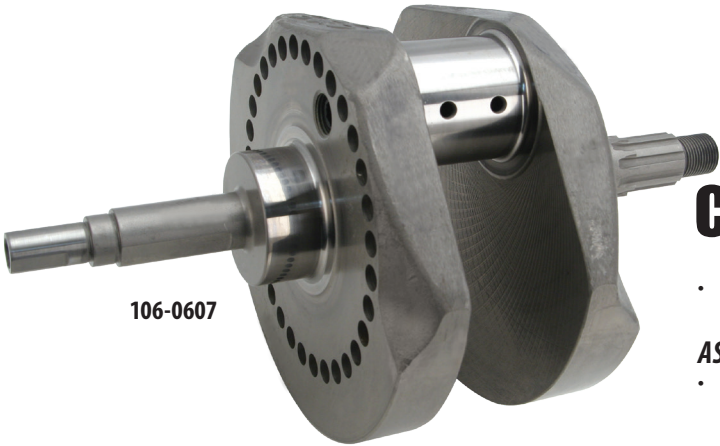
| | | |
|--------------------|----------|------------|
| Silver powder coat | 106-0604 | \$2,111.95 |
| WBlack powder coat | 106-0605 | \$2,111.95 |
| Full Polish | 106-0603 | \$2,858.95 |

REPLACEMENT PARTS: SEE PAGE 20



NOTE

S&S recommends using Permatex Right Stuff® for sealing crankcases.



CRANKSHAFTS

- Crankshafts are machined and ready to assemble with standard bearings.

ASSEMBLY CONTENTS

- Crank assembly includes rods and bearings

| Engine | Stroke | Crankshaft Only | MSRP | Crankshaft Assembly | MSRP |
|----------------|--------|-----------------|------------|---------------------|------------|
| X117/X132 | 4⅜" | 106-0607 | \$1,363.95 | 106-0609 | \$1,477.95 |
| X114/X121/X128 | 4¼" | 106-0606 | \$1,363.95 | 106-0608 | \$1,477.95 |

CONNECTING RODS

- These forged rods are 7.400" plain bearing, automotive style, with a two piece design, 2.200" journal diameter, and .927" wristpin diameter
- Since the front and rear rods are identical, rods are not sold in sets but are available individually
- Bearings are not included and must be purchased separately

| | | |
|--|------------------|----------|
| Connecting Rod Front or Rear | 106-0583 | \$220.95 |
| Bearing Inserts Standard (<i>set of 4</i>) | 106-0569 | \$59.95 |
| Bearing Cap Screws 12 pt, 7/16"-20 x 1.60" | 50-0346-S | \$12.95 |



BELT COVERS

- Direct replacement for the belt cover on any X-Wedge engine
- Updated vented cover providing additional cooling promoting longer belt life
- Chrome

106-0587± | \$266.95

±  WARNING: Cancer and Reproductive Harm – www.P65Warnings.ca.gov



REPLACEMENT PARTS: SEE PAGE 16

OIL PUMP

- Direct replacement for the oil pump in any X-Wedge engine

106-0680 | \$367.95

REPLACEMENT PARTS: SEE PAGE 15



CYLINDERS & PISTONS

FOR S&S® X114, X117 & X121 X-WEDGE® ENGINES

- For X114, X117 & X121 X-Wedge engines
- The front and rear cylinders and pistons are interchangeable
- Cylinders can be honed to the specified size and any piston of the correct oversize will fit with the correct clearance.
- Silver powder coat, wrinkle black (WBlack) powder coat, or polished finish



INDIVIDUAL CYLINDERS ONLY FOR S&S® X-WEDGE® ENGINES

| Displacement | Stroke | Bore | Cylinder Length | Compression Ratio | Silver | MSRP | WBlack | MSRP | Full Polished | MSRP |
|--------------|----------------|--------|-----------------|-------------------|----------------|----------|----------------|----------|----------------|----------|
| 114" / 117" | 4.25" / 4.375" | 4.125" | 4.645" | 8.5:1 / 9.75:1 | 91-7461 | \$398.95 | 91-7463 | \$398.95 | 91-7465 | \$552.95 |
| 121" | 4.25" | 4.25" | 4.645" | 9.75:1 | — | — | 91-7469 | \$398.95 | 91-7471 | \$552.95 |

Pistons are sold separately. See chart below.

FORGED INDIVIDUAL PISTONS FOR S&S® X-WEDGE® ENGINES

| Displacement | Standard | MSRP |
|--------------|------------------|----------|
| 114" | 106-0108 | \$314.95 |
| 117" | 106-0108 | \$314.95 |
| 121" | 106-0109A | \$314.95 |

All individual pistons include one piston, rings, wristpin, and clips. Due to piston coating, piston measurements are not reliable. Bore cylinders to nominal diameter +/- .0005" for correct clearance.

REPLACEMENT WRISTPINS AND KEEPERS

| Description | Part # | MSRP |
|-------------|--------------------|------------------|
| Wristpin | X114 & X117 & X121 | 106-1000 |
| Keeper | All Displacements | 94-9278-S |

REPLACEMENT MOLY FACED RINGS FOR X-WEDGE PISTONS

| Description | Standard | MSRP |
|-------------|----------|------------------|
| X114 & X117 | 2 pack | 106-0011 |
| X121 | 1 pack | 106-0709A |
| | 2 pack | 106-0012 |

X-WEDGE® GASKETS & DOWELS

| Description | Bore | Part # | MSRP |
|-------------------------|--------|----------------|----------------|
| Head Gasket | 4 3/8" | each | 93-1132 |
| | 4 1/4" | each | 93-1131 |
| | 4 1/8" | each | 93-1130 |
| Base Gasket | All | each | 93-1120 |
| Dowel Pin .187" x .635" | each | 50-8031 | \$2.95 |

4³/₈" BORE CYLINDERS & PISTONS UPGRADES FOR X-WEDGE® X128 AND X132 ENGINES

Increase the displacement of your X-Wedge engine with these bolt-on cylinder and piston kits. A 1/8" bore increase will take an X121 to X128, and a 1/4" bore increase will take an X117 to X132! No changes to the crankcases or flywheels are required.

- Bolt-on performance
- Increase displacement without crankcase modifications
- Silver powder coat, wrinkle black (WBlack) powder coat or polished finish



Pistons are sold separately

4³/₈" BORE CYLINDER ONLY SETS FOR S&S® X-WEDGE® ENGINES

| Displacement | Stroke | Bore | Cylinder Length | Compression Ratio | Silver | MSRP | WBlack | MSRP | Full Polished | MSRP |
|--------------|-----------------|--------|-----------------|-------------------|-----------------|----------|-----------------|----------|-----------------|------------|
| 128" / 132" | 4.250" / 4.375" | 4.375" | 4.645" | 10.3:1 | 910-0002 | \$734.95 | 910-0001 | \$734.95 | 910-0003 | \$1,049.95 |

Cylinders are honed and ready for assembly. Cylinder sets include front and rear cylinders. Includes head and base gaskets. Pistons are sold separately. See chart below.

FORGED PISTON SETS FOR S&S® X-WEDGE® ENGINES

| Displacement | Standard | MSRP | +.010" | MSRP |
|--------------|-----------------|----------|-----------------|----------|
| 128" | 920-0003 | \$419.95 | 920-0006 | \$419.95 |
| 132" | 920-0002 | \$419.95 | 920-0004 | \$419.95 |

All piston sets are for two pistons and include rings, wristpin, and clips. Due to piston coating, piston measurements are not reliable. Bore cylinders to nominal diameter +/- .0005" for correct clearance.

REPLACEMENT MOLY FACED RINGS FOR X-WEDGE PISTONS

| Description | Standard | MSRP |
|-------------|------------------------|---------|
| X128 & X132 | 2 pack 94-4285X | \$52.95 |

REPLACEMENT WRISTPINS AND KEEPERS

| Description | Part # | MSRP |
|-------------|------------------|---------|
| Wristpin | 94-9277 | \$31.95 |
| Keeper | 94-9278-S | \$3.95 |

X-WEDGE® GASKETS

| Description | Bore | Part # | MSRP |
|-------------|--------------------------------------|----------------|---------|
| Head Gasket | 4 ³ / ₈ " each | 93-1132 | \$41.95 |
| Base Gasket | All each | 93-1120 | \$10.95 |

CAM CHEST REPLACEMENT PARTS

| Description | Part # | MSRP |
|----------------------------------|-----------------|----------|
| Cam sprocket, 38-tooth | 106-0740 | \$21.95 |
| Belt, cam drive, 127-tooth, 30mm | 106-0571 | \$130.95 |
| Belt tensioner, 30mm | 370-0007 | \$209.95 |
| Pinion Update Kit | 370-0015 | \$86.95 |



CAM BEARING REPLACEMENT PARTS

| Description | Part # | MSRP |
|------------------------------------|-----------------|---------|
| Inner Cam Bearing for S&S X-Wedge® | 31-4080 | \$11.95 |
| Outer Cam Bearing for S&S X-Wedge® | 106-1424 | \$16.95 |



X-WEDGE® EASY START CAMS

RECOMMENDED APPLICATIONS FOR S&S X-WEDGE CAMS

548 CAMS – Stock replacement cams for X114, X117, and X121 engines. Emissions compliance is maintained when these cams are installed. Use with stock pushrods. Non-interference.

569 CAMS – Bolt-in performance upgrade cams for any displacement X-Wedge engine from 9.8:1 to 10.2:1 compression ratio. Use with stock pushrods. These cams are non-interference, but are not emissions compliant.

618 CAMS – Performance upgrade cams for any displacement X-Wedge engine from 9.8:1 to 10.3:1 compression ratio. The 618 cams can be installed as a bolt-in. The 618 cams are not non-interference cams, and are not emissions compliant. Due to the smaller diameter cam base circle, the X618 cams require a special, slightly longer pushrod set #930-0021, or billet aluminum rocker arm set #900-0213.



| S&S® X-WEDGE® EASY START CAMS SPECIFICATIONS | | | | | | | | | |
|--|--|--------------------------|----------------|---------|-------------------------|------------|---------|-----------------------|---------|
| Cam Name | Valve Timing (open/close) ¹ | | Valve Duration | | Valve Lift ² | Centerline | | Lift@TDC ³ | |
| | Intake | Exhaust | Intake | Exhaust | | Intake | Exhaust | Intake | Exhaust |
| | Open BTDC/ Close ABDC | Open BBDC/ Close ATDC | | | | | | | |
| 548 | 5°/55° | 57°/0° | 240° | 237° | 0.548" | 115° | 118.5° | 0.136" | 0.080" |
| 569 | 9°/40° | 47°/17° | 229° | 244° | 0.569" | 105.5° | 104.5° | 0.137" | 0.179" |
| 618 | 9°/43° | 62°/23° | 232° | 264° | 0.618" | 107° | 109° | 0.140" | 0.224" |

¹Timing designation is a function of zero lash @ 0.053" off base circle.

²Valve lift is calculated from a 1.76:1 ratio rocker arm.

³TDC lift is measured at the valve and is for reference only.

¹Timing designation is a function of zero lash @ 0.053" off base circle.

²Valve lift is calculated from a 1.76:1 ratio rocker arm.

³TDC lift is measured at the valve and is for reference only.

| 548 (3 cams) | | 569 Easy Start (3 cams) | | 618 Easy Start (3 cams) | |
|-----------------|----------|-------------------------|----------|-------------------------|----------|
| 106-0577 | \$472.95 | 330-0047 | \$524.95 | 330-0074 | \$467.95 |

COMPRESSION RELEASE 548 UPDATE KIT

| | | |
|------------------|-----------------|----------|
| (2 exhaust cams) | 106-3809 | \$446.95 |
|------------------|-----------------|----------|

DISCLAIMER: NOT LEGAL FOR SALE OR USE IN CALIFORNIA ON ANY POLLUTION CONTROLLED MOTOR VEHICLE. Not legal for sale or use on any EPA pollution controlled motor vehicle.

HIGH PERFORMANCE HYDRAULIC TAPPETS



37-0030 (each) | \$33.95

NOTE

Tappets for S&S X-Wedge engines are not designed for use with S&S HL₂T limited travel kits.

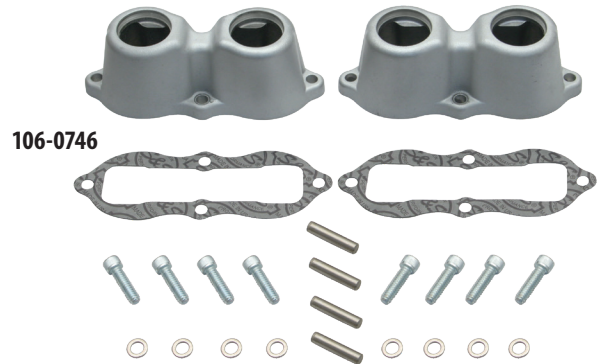
TAPPET COVERS

- Silver powder coat, wrinkle black powder coat, or polished finish
- Two tappet guides, gaskets, dowel pins, and mounting hardware

| | | |
|---------------------------|-----------------|----------|
| Silver Powder coat | 106-0746 | \$130.95 |
| Wrinkle Black Powder coat | 106-0747 | \$130.95 |
| Polished | 106-0745 | \$146.95 |

REPLACEMENT PARTS

| | | |
|---------------|----------------|--------|
| Gasket (each) | 37-0006 | \$7.95 |
|---------------|----------------|--------|



106-0746



PUSHRODS

X-Wedge® Pushrod Sets—All displacements with stock rocker arms

| | | |
|---|-----------------|---------|
| Stock Length (for use with 545, 548 and 569 cams) | 106-0699 | \$88.95 |
|---|-----------------|---------|

SIDEWINDER® VALVE SPRINGS



S&S® SIDEWINDER® VALVE SPRINGS SPECIFICATIONS

| Lift | Installed Height | Seat Force | Force @ Max Lift | Max RPM |
|-------|------------------|------------|------------------|---------|
| .585" | 2.00" | 85 lb. | 264 lb. | 5750 |

- 585 Sidewinder Springs:
- Lower spring force results in reduced valve train noise, increased valve stability, and longer valve train component life
- Stock replacement in X-Wedge
- Valve keepers, springs, top collars, bottom collars, 0.015" and 0.030" shims

900-0595 | \$131.95

REPLACEMENT PARTS: SEE PAGE 22

CNC PORTED CYLINDER HEADS

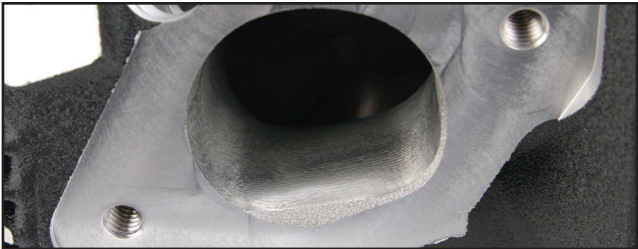
- CNC machined ports for a consistent performance increase from original heads
- Choice of two different chamber machinings (100cc or 103cc)
- Great throttle response, high velocity port without losing low RPM torque
- Assembled with performance valves and .650 springs
- Full polished, silver, wrinkle black powdercoat

SERVICE OPTIONS

- Buy New CNC, or...
- Rework Service
 - Heads sent to S&S
 - Get the same set of heads back with CNC machined ports & chambers
 - The best option for heads with a special cosmetic treatment
 - Allow 2 week turn-around
- Custom CNC Port Duplication
 - S&S can digitize your port design and machine it in your heads, ask an S&S customer service representative for details

106-6480 | Call For Pricing

| | | Stock Heads | CNC Ported by S&S® |
|--|---------|-------------|--------------------|
| Valve Size | Intake | 2.00" | 2.2" |
| | Exhaust | 1.605" | 1.675" |
| Max "Free Spin" Valve Lift* | | 0.0580" | 0.0580" |
| Port Flow | Intake | 261.2 cfm | 315 cfm |
| | Exhaust | 190.8 cfm | 215 cfm |
| Compression Ratio | 128" | 9.7:1 | 10:1 |
| | 132" | 9.9:1 | 10.3 |
| Cylinder Heads Decked | | — | 0.030" |
| Chamber Volume | | 103 cc | 100 cc** |
| **Free Spin" valve lift controlled by valve reliefs in piston. **After decking. Flow testing performed on a SuperFlow® 1020 flow bench at 28" of water test pressure at .600" lift through radiused inlet. | | | |



Shown is an intake port from a CNC machined X-Wedge® cylinder head. Notice the detailed machining that gives our CNC ported heads the performance that your big-inch engine demands.



Digitized port shapes are faithfully reproduced in X-Wedge cylinder heads on our 5-Axis CNC machining center. Intake port, exhaust port and combustion chamber are all modified. This head will be assembled with new valves and high lift valve springs to complete the package.

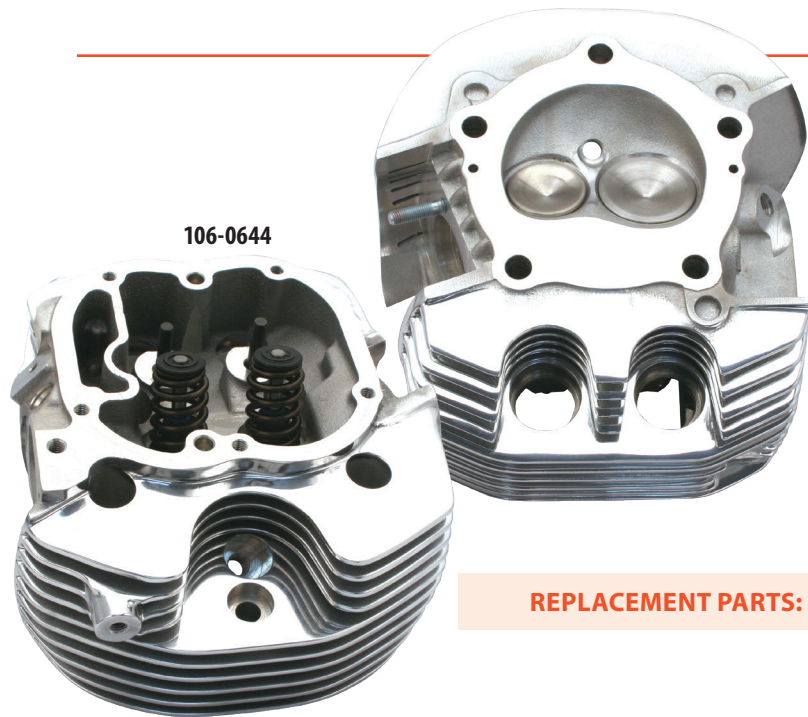
INDIVIDUAL PARTS FOR X-WEDGE® CNC PORTED HEADS

| | | | |
|------------------|--------|-----------|---------|
| Spring | | 106-5689 | \$52.95 |
| Intake Valve | | 900-0275 | \$44.95 |
| Exhaust Valve | | 900-0276 | \$73.95 |
| Valve Guide Seal | 4 pack | 900-0737 | \$9.95 |
| Top Collar | | 106-5690 | \$13.95 |
| Bottom Collar | | 106-3827 | \$14.95 |
| Valve Keeper | each | 90-2094-S | \$3.95 |
| | 8 pack | 50-7166 | \$20.95 |

CNC porting is not available for previously ported heads, heads that have been structurally damaged, or heads that are determined to be unserviceable during initial inspection. These heads will be returned to the customer without modification. In these cases customer will be notified and options reviewed. New CNC ported heads are available for purchase.

Due to variations in cylinder head castings, all inside surfaces of the ports may not "clean up" during machining. As a result, the inside of one or more ports may not appear to be completely machined. This does not effect performance and is not considered a defect.

DISCLAIMER: NOT LEGAL FOR SALE OR USE IN CALIFORNIA ON ANY POLLUTION CONTROLLED MOTOR VEHICLE. Not legal for sale or use on any EPA pollution controlled motor vehicle.



CYLINDER HEADS

- .585" Street Performance springs
- Powder metal valve guides
- Completely assembled stock heads—ready to bolt-on
- Silver powder coat, Wrinkle Black (WBlack) powder coat, or Full Polished Finish

| | | |
|---------------|-----------------|------------|
| Silver | 106-0646 | \$1,259.95 |
| WBlack | 106-0647 | \$1,259.95 |
| Full Polished | 106-0644 | \$1,679.95 |

REPLACEMENT PARTS: SEE PAGE 22

HEAD BOLTS

Will fit any production X-Wedge engine regardless of displacement. 10 are required for complete replacement.

| | | |
|----------------|-------------------------|--------|
| Head bolt | 93-3028-S (each) | \$7.95 |
| Washer (.150") | 50-0418-S (each) | \$4.95 |

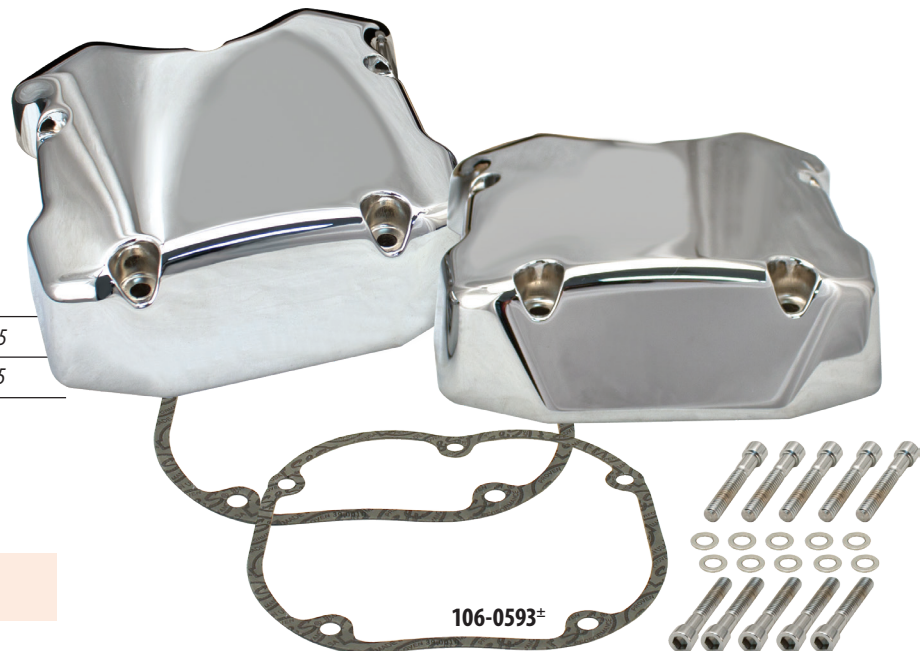


ROCKER COVERS

- OEM stock replacement—same as original equipment
- Covers are interchangeable for front or rear cylinder heads
- Die-cast aluminum with show chrome finish
- Rocker cover(s), mounting hardware, gasket(s)

| | | |
|--|------------------------------|----------|
| Single Rocker Cover (with hardware & gasket) | 106-0600 [±] | \$262.95 |
| Rocker Cover Set (with hardware & gaskets) | 106-0593 [±] | \$472.95 |

[±] ⚠ WARNING: Cancer and Reproductive Harm – www.P65Warnings.ca.gov



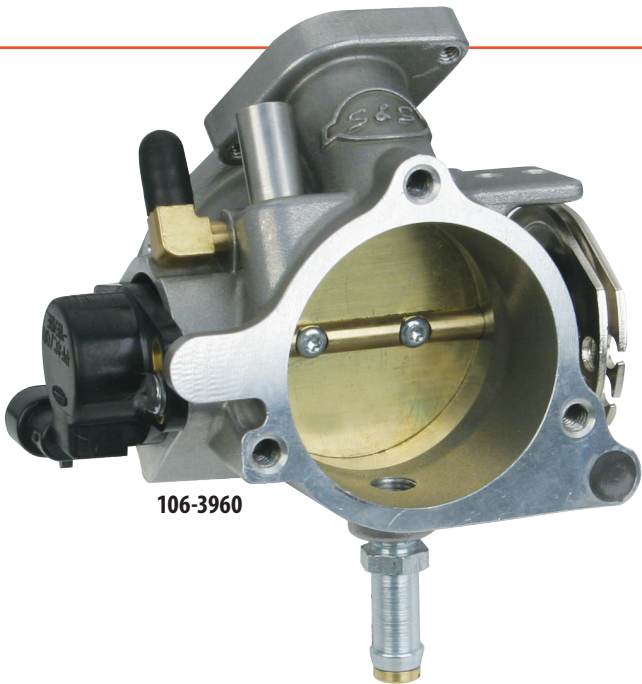
REPLACEMENT PARTS: SEE PAGE 22

THROTTLE BODY

| | | |
|------|------------------|----------|
| 58mm | 106-3960* | \$314.95 |
| 52mm | 106-3141 | \$314.95 |

*DISCLAIMER: NOT LEGAL FOR SALE OR USE IN CALIFORNIA ON ANY POLLUTION CONTROLLED MOTOR VEHICLE. Not legal for sale or use on any EPA pollution controlled motor vehicle.

REPLACEMENT PARTS: SEE PAGE 19



106-3960

FUEL PUMP FOR FUEL INJECTED CUSTOM BIKES

- Mounts in nearly any tank
- Hollow mounting bolts secure the pump flange to the bottom of the tank and provide an outlet for wiring and pressurized fuel
- A fiber media filter, placed at the lowest point in the tank prevents contaminants from damaging the fuel pump
- Fuel pump, inlet hose, an in-tank filter, mounting hardware, and instructions

| S&S® IN-TANK FUEL PUMP SPECIFICATIONS | | | |
|---------------------------------------|--------------|----------|--------------|
| Manufacturer | Pressure | Capacity | Current Draw |
| Walbro | 4 Bar/58 PSI | 45 Lt/Hr | 5 Amps |

| | | |
|--------------------------------|----------------|----------|
| For Fuel Injected Custom Bikes | 55-5089 | \$682.95 |
|--------------------------------|----------------|----------|

REPLACEMENT PARTS FOR FUEL PUMP

| | | |
|--------------|----------------|---------|
| Filter | 19-0458 | \$29.95 |
| Hardware Kit | 55-5094 | \$94.95 |



NOTE

This is not a stock replacement pump for Harley-Davidson® motorcycles.

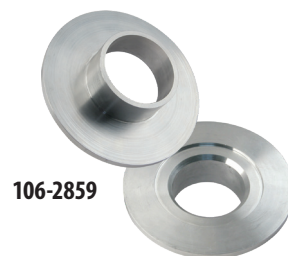
TOOLS FOR S&S® X-WEDGE® ENGINES

BEARING PROTECTOR TOOLS

- Slips over the bearing surface of the X-Wedge crankshaft to prevent damage to the surface of the main bearing journal when mounting the crank on an S&S flywheel assembly fixture
- The flanged sleeve offers protection against scratches and dents
- It can also be used on the sprocket side of Victory® crankshafts
- Made of billet aluminum



106-2858

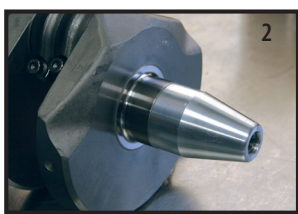


106-2859

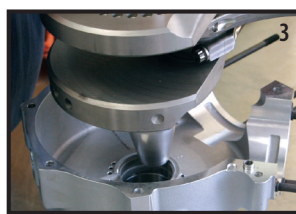
| | | |
|---|----------|---------|
| Crankshaft Main Bearing Protector | 106-2858 | \$41.95 |
| Crankcase Main Bearing Insert Protector | 106-2859 | \$57.95 |



1



2



Easy as 1-2-3! 106-2859 crankcase bearing protector installs in seconds, and not only protects the crankcase main bearing insert from the sharp surfaces on the sprocket shaft, but also guides the crankshaft into the bearing.

CAM ALIGNMENT TOOLS

- Three dowel pins are used to position each of the three cam belt pulleys with alignment holes in the cam plate
- Cam Belt Tensioner Socket allows for the easy removal and installation of cam drive belt

| | | |
|---------------------------|-------------------|---------|
| Cam Alignment Dowels | 106-0576 (3 pack) | \$31.95 |
| Cam Belt Tensioner Socket | 106-0750 | \$56.95 |

106-0750



MAIN BEARING INSTALLATION TOOL

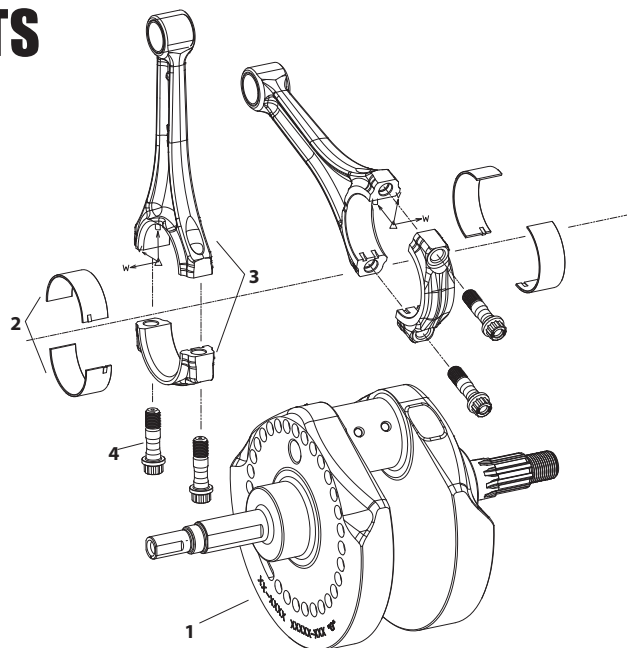
- Consists of a bearing guide that holds the two plain bearing halves in position and a shouldered press tool that fits through the guide to press the new bearings into the crankcase
- The press tool is also used by itself to press old bearings out of the crankcase
- For cam and driveside bearings in X-Wedge engines
- A hydraulic or arbor press is required to install or remove bearings.

106-0718 | \$104.95



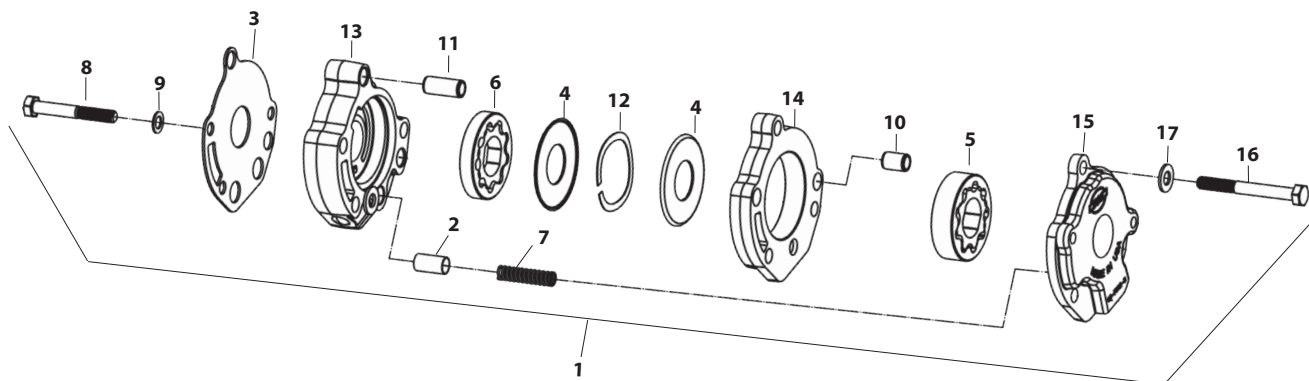
CRANKSHAFT REPLACEMENT PARTS

1. Crankshaft Assembly (includes #2, 3, 4)
 - All X-Wedge w/ 43/8" stroke - X117/X132 **106-0609** \$1,477.95
 - All X-Wedge w/ 41/4" stroke - X114/X121/X128 **106-0608** \$1,477.95
2. Bearing Insert (4 pack) **106-0569** \$59.95
3. Connecting Rod (each) - front or rear **106-0583** \$220.95
4. Bearing Cap Screw (each) **50-0346-S** \$12.95



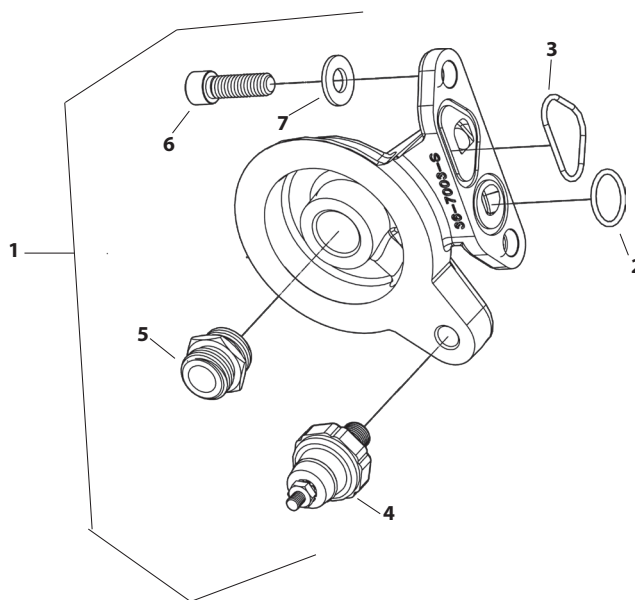
OIL PUMP REPLACEMENT PARTS

- | | | | | | |
|--|------------------|----------|---|-----------------|---------|
| 1. Oil pump, kit, X-Wedge..... | 106-0680 | \$367.95 | 11. Dowel pin, .437" x 1" (each)..... | 50-8284 | \$4.95 |
| 2. Valve, pressure relief, X-Wedge..... | 106-0774 | \$12.95 | 12. Spring, wave, 1.60" x 2" x .085"..... | 106-0773 | \$25.95 |
| 3. Plate, S&S oil pump, X-Wedge..... | 106-0694 | \$15.95 | 13. Oil pump, body, supply, X-Wedge..... | 106-0679 | \$67.95 |
| 4. Plate, divider, S&S oil pump, X-Wedge (each)..... | 36-7005 | \$30.95 | 14. Oil pump, body, return, X-Wedge (Includes dowel pin #11)..... | 106-0678 | \$74.95 |
| 5. Rotor, set, oil pump return, X-Wedge..... | 106-0717 | \$72.95 | 15. Cover, oil pump, return, X-Wedge..... | 106-0596 | \$42.95 |
| 6. Rotor, set, oil pump supply, X-Wedge..... | 36-7021-S | \$38.95 | 16. Screw, HHC, GR8, 5/16-18 x 3..... | 106-1694 | \$1.00 |
| 7. Spring, relief valve, X-Wedge (each)..... | 36-7041 | \$2.95 | 17. Washer, flat, .344" x .688" x .065", zinc, steel..... | 50-7034 | \$0.95 |
| 8. Screw, HHC, 5/16-18 x 2 1/4 (each)..... | 50-0462 | \$2.95 | | | |
| 9. Washer, flat, zinc, .319" (each)..... | 50-7026 | \$2.95 | | | |
| 10. Dowel pin, .437" diameter x .610" (each)..... | 50-8177 | \$3.95 | | | |
| 4 pack..... | 50-8177-4 | \$10.95 | | | |



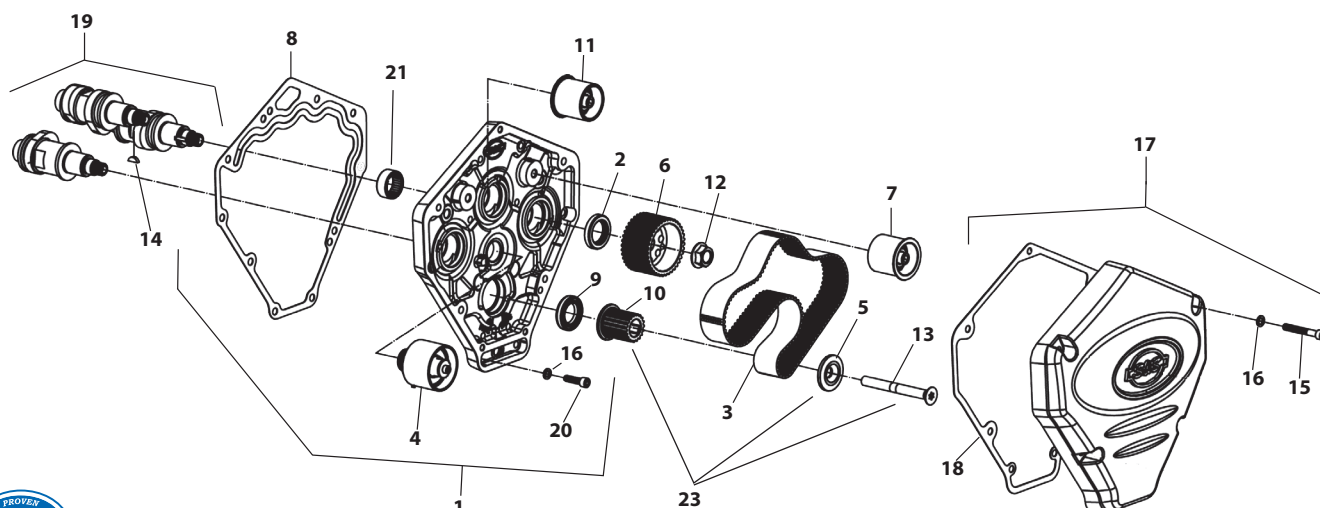
OIL FILTER BRACKET REPLACEMENT PARTS

- | | |
|---|--------------------------|
| 1. Bracket, oil filter, X-Wedge | |
| Polished..... | 106-0572 \$115.95 |
| Silver..... | 106-0573 \$104.95 |
| Wrinkle black..... | 106-0574 \$104.95 |
| 2. O-ring, Viton, -017..... | 50-0466 \$2.95 |
| 3. O-ring, Viton, size -022 (each)..... | 50-8005 \$2.95 |
| 4. Switch, oil pressure, packaged, X-Wedge..... | 106-0744 \$26.95 |
| 5. Fitting, straight, 3/4-16 UNF 2a (each)..... | 50-8197-S \$12.95 |
| 6. Screw, SHC, 5/16-18 x 1, zinc..... | 50-0101 \$0.95 |
| 7. Washer, flat, 5/16 x 1 1/16 x 1/16, zinc, steel..... | 50-7034 \$0.95 |



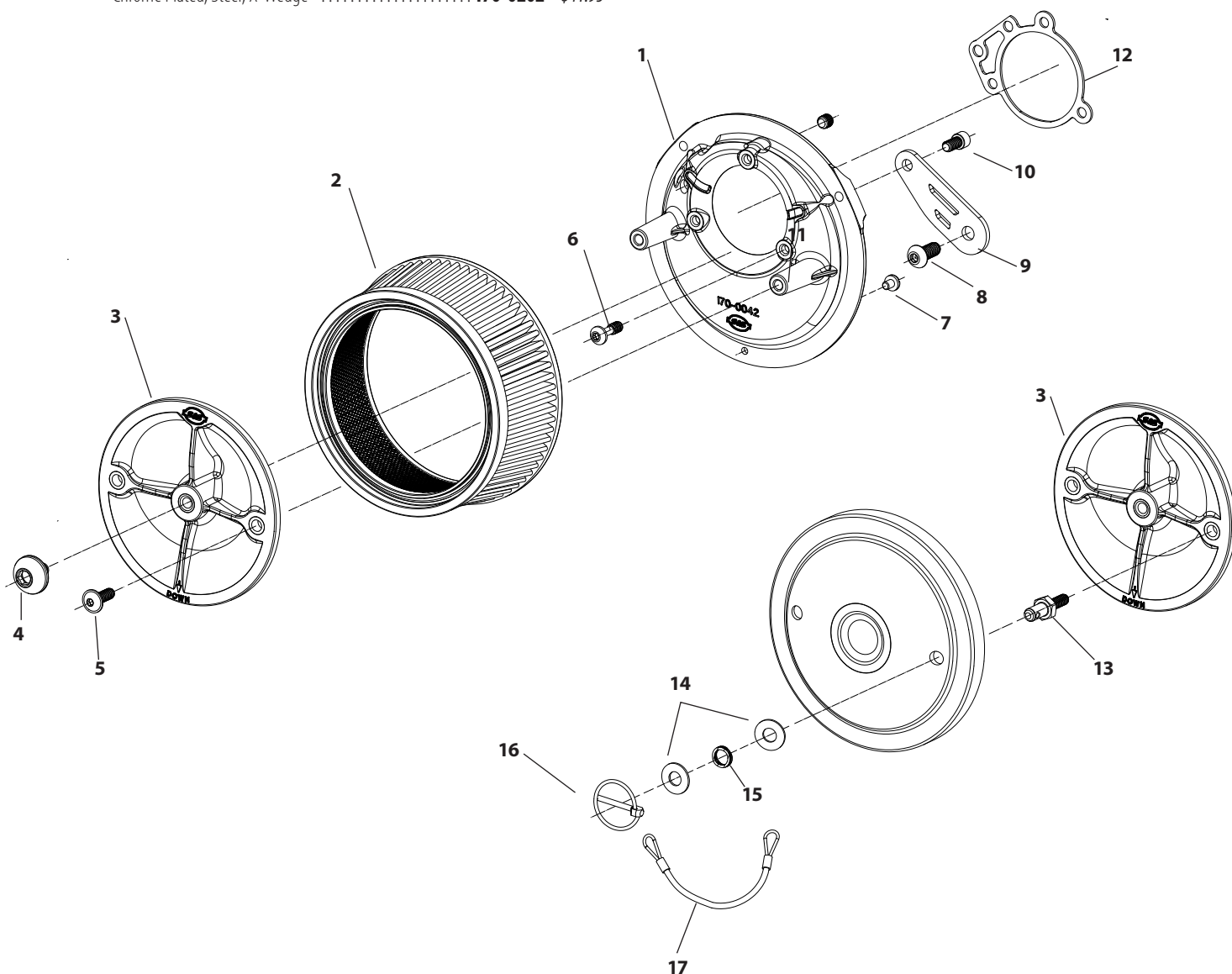
CAMS AND RELATED VALVE TRAIN COMPONENTS REPLACEMENT PARTS

- | | |
|--|---------------------------|
| 1. Cover, intermediate cam (includes gasket and hardware) | |
| Polished..... | 106-0590 \$377.95 |
| Silver..... | 106-0591 \$377.95 |
| Wrinkle black..... | 106-0592 \$377.95 |
| 2. Seal, cam cover/cam, .875" x 1.375" x .250", viton each..... | 37-0230 \$17.95 |
| 3. Belt, cam drive, 127 tooth, 30mm..... | 106-0571 \$130.95 |
| 4. Tensioner, belt, packaged, 30mm..... | 370-0007 \$209.95 |
| 5. Washer, pinion sprocket, flanged..... | 500-0324 \$14.95 |
| 6. Sprocket, cam, 38-tooth..... | 106-0740 \$21.95 |
| 7. Pulley, front, idler, 1.50" x 30mm..... | 106-0696 \$52.95 |
| 8. Gasket, intermediate cam cover..... | 37-0097 \$20.95 |
| 9. Seal, pinion, dual lip, 22mm x 35mm x 7mm..... | 37-0044 \$18.95 |
| 10. Sprocket, pinion, 19-tooth..... | N/A - |
| 11. Pulley, rear, idler, 1.50" x 30mm..... | 106-0697 \$52.95 |
| 12. Nut, Jam, HH, 1/2-20, Zinc..... | 500-0325 \$2.95 |
| 13. Bolt, 3/8" Wrenching, Flanged, 12 pt, 3/8-24..... | 500-0322 \$7.95 |
| 14. Key, woodruff, .125" x .500" x .491", steel each..... | 50-8223-S \$2.95 |
| 5 pack..... | 50-1010 \$2.95 |
| 15. Screw, SHC, 1/4-20 x 1 3/4", chrome..... | 50-0488± \$4.95 |
| 16. Washer, flat, .260" x .425" x .060", chrome, steel each..... | 50-7017± \$2.95 |
| 12 pack..... | 50-7013± \$7.95 |
| 17. Cover, belt drive | |
| Chrome..... | 106-0587± \$266.95 |
| 18. Gasket, belt drive cover..... | 106-0087 \$5.95 |
| 19. Camshaft, kit, .548..... | 106-0577 \$472.95 |
| 20. Screw, SHCS, 1/4-20 x 7/8"..... | 50-0025 \$0.95 |
| 21. Bearing, assembly, outer..... | 106-1424 \$16.95 |
| 22. Installation kit (Not Shown)..... | 36-0481 \$220.23 |
| 23. Pinion Update Kit..... | 370-0015 \$86.95 |



STEALTH AIR CLEANER KIT REPLACEMENT PARTS

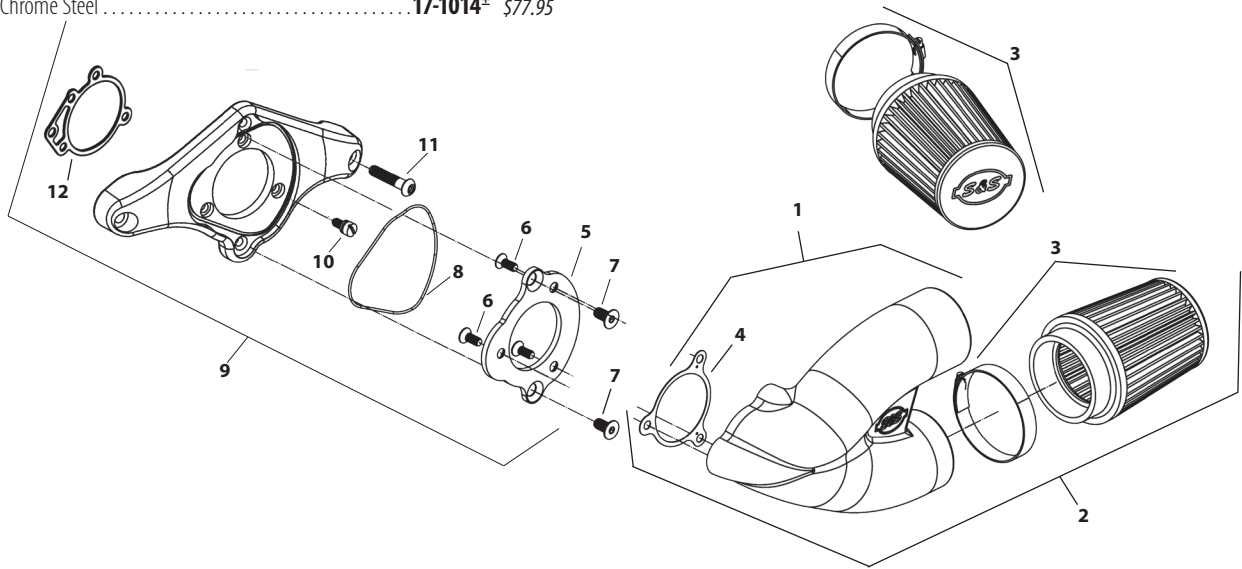
- | | | | | | |
|--|------------------|------------------|---|-----------------|---------|
| 1. Backplate, Air Cleaner, Stealth, Machined, Powder coated, WBlack, Die Cast, X-Wedge® | 170-0199 | \$104.95 | 10. Screw,SHC,w/ Thread Lock,1/4-20 x 1/2", Zinc Plated,Alloy Steel | 106-2084 | \$2.95 |
| 2. Filter, Air, Tapered, Standard Pleated, 5.500" x 6.000" x 2.375", Cotton, Stealth Air Cleaner Kit | 170-0126 | \$42.95 | 11. Plug,Pipe,3/4 Taper,1/6-27 NPTF x .156",Zinc,Steel | 50-8332 | \$0.95 |
| 3. Plate, Top, Air Filter, Molded, Plastic | 170-0026 | \$13.95 | 12. Gasket,Backplate Throttle Body, Stock CV/EFI Standard | 106-1724 | \$3.95 |
| 4. Screw, SHCB, 5/16-18 x .500", Polished, Stainless Steel | 500-0051 | Call for Pricing | Lanyard Style | 170-0137 | \$24.95 |
| 5. Screw, SHC, Flanged Button, 1/4-20 UNC x .750" | 500-0060 | \$2.95 | 13. Screw, Hex, Hood-pin, 1/4-20, UNC | 500-0113 | \$16.95 |
| 6. Screw, SHCB, 1/4-20 UNC X .825" | 500-0059 | \$2.95 | 14. Washer, Fender, Chrome Plated | 500-0094 | \$2.95 |
| 7. Screw,PH,10-24 x 1/4",Zinc,Steel (each) | 50-0041 | \$2.95 | 15. Spring, Wave Washer, Stainless Steel | 500-0093 | \$6.95 |
| 10 pack | 50-0062 | \$4.95 | 16. Lynch Pin | 500-0083 | \$17.95 |
| 8. Screw,BHC,w/ Thread Lock,5/16-18 x 3/4",Chrome, ASTM A574-92A | 50-0269-5 | Call for Pricing | 17. Lanyard, 6" Stainless Steel | 500-0095 | \$8.95 |
| 9. Bracket, Backplate Mounting, Stealth Air Cleaner, Chrome Plated, Steel, X-Wedge® | 170-0202 | \$41.95 | 18. Sealant, Loctite®, #243, 5ml, Blue (not shown) | 51-9003 | \$5.95 |



SINGLE BORE TUNED INDUCTION SYSTEM

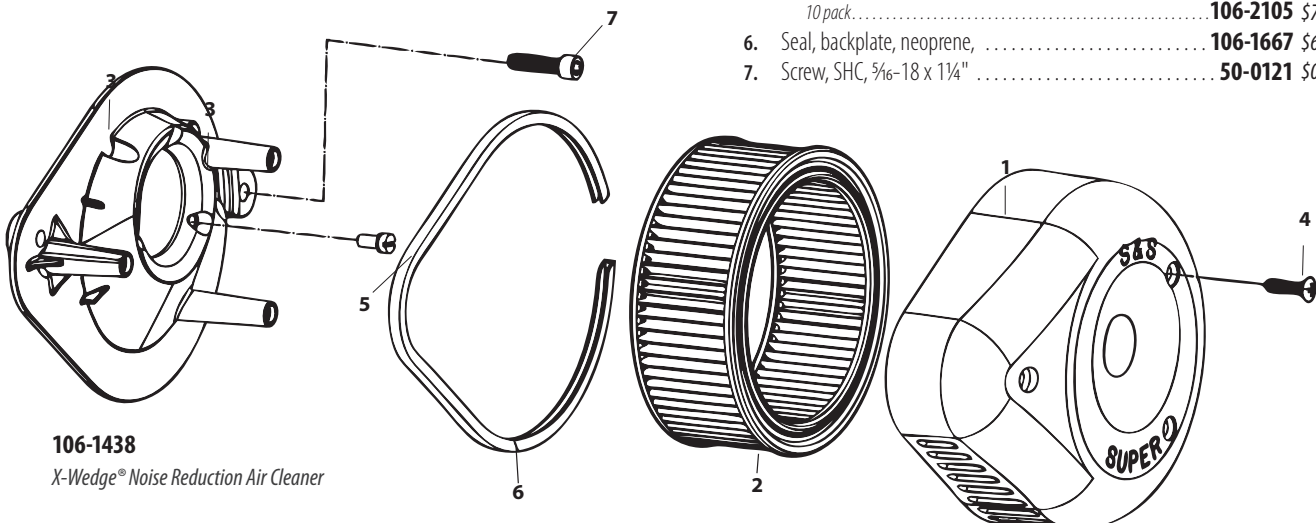
REPLACEMENT PARTS

- | | | |
|---|-------------------|----------|
| 1. Tuned Intake Kit, 2.19" Single Bore | | |
| Wrinkle Black..... | 106-4966 | \$311.95 |
| Chrome Plated..... | 106-4967± | \$314.95 |
| 2. Tuned Intake Assembly, 2.19" Single Bore | | |
| Natural..... | 106-4968 | \$188.95 |
| Wrinkle Black..... | 106-4969 | \$179.95 |
| Chrome Plated..... | 106-4970± | \$188.95 |
| 3. Air Filter, with Clamp, Stainless Cap — Conical — 2 1/16" I.D. x 4" | | |
| Red (each)..... | 17-1020 | \$57.95 |
| Blue (each)..... | 17-1023 | \$57.95 |
| 4. Gasket, Intake — Adapter Plate, 2.19" Single Bore Tuned Intake | 17-1022 | \$5.95 |
| 5. Plate, Adapter, 2.19" Single Bore Tuned Intake | | |
| Chrome Steel..... | 17-1014± | \$77.95 |
| 6. FHSC 1/4-20 x 5/8" (each)..... | 50-0433 | \$3.95 |
| 7. FHSC 5/16-18 x 3/4" (each)..... | 50-0432 | \$5.95 |
| 8. O-Ring, Adapter Plate Bracket, 3 3/8" O.D. x 3 1/2" I.D. 1/16 CS, Viton® | | |
| each..... | 50-0446 | \$3.95 |
| 9. Bracket Kit, S&S X-Wedge®..... | 106-4972 | \$313.95 |
| 10. Backplate Screw LSHC Black Oxide (X-Wedge Only)..... | 106-0817 | \$3.95 |
| 11. Screw, Button Head Cap Screw, 5/16-18 x 1 1/2" Grade 5, Chrome | | |
| each..... | 50-0309-S± | \$5.95 |
| 12. Gasket, Backplate (each)..... | 106-1724 | \$3.95 |
| 10 pack..... | 106-2328 | \$26.95 |
| 13. Filter oil, 8oz. bottle (N/S) | | |
| Red..... | 106-1163 | \$30.95 |
| Blue..... | 106-1164 | \$30.95 |



TEARDROP AIR CLEANER REPLACEMENT PARTS

- | | | |
|---------------------------------------|-----------------|----------|
| 1. Air Cleaner Cover | | |
| Chrome, Slasher..... | 17-0004± | \$158.95 |
| 2. Element, pleated..... | 106-4722 | \$23.95 |
| 3. Backplate SBFFI..... | 106-0568 | \$92.95 |
| 4. Screw, oval 1/4-20 x 1 (each)..... | 50-0072 | \$2.95 |
| 3 pack..... | 50-1052 | \$3.95 |
| 10 pack..... | 50-0094 | \$8.95 |
| 5. Backplate screw, Zinc Plated | | |
| each..... | 106-2084 | \$2.95 |
| 10 pack..... | 106-2105 | \$7.95 |
| 6. Seal, backplate, neoprene..... | 106-1667 | \$6.95 |
| 7. Screw, SHC, 5/16-18 x 1 1/4"..... | 50-0121 | \$0.95 |




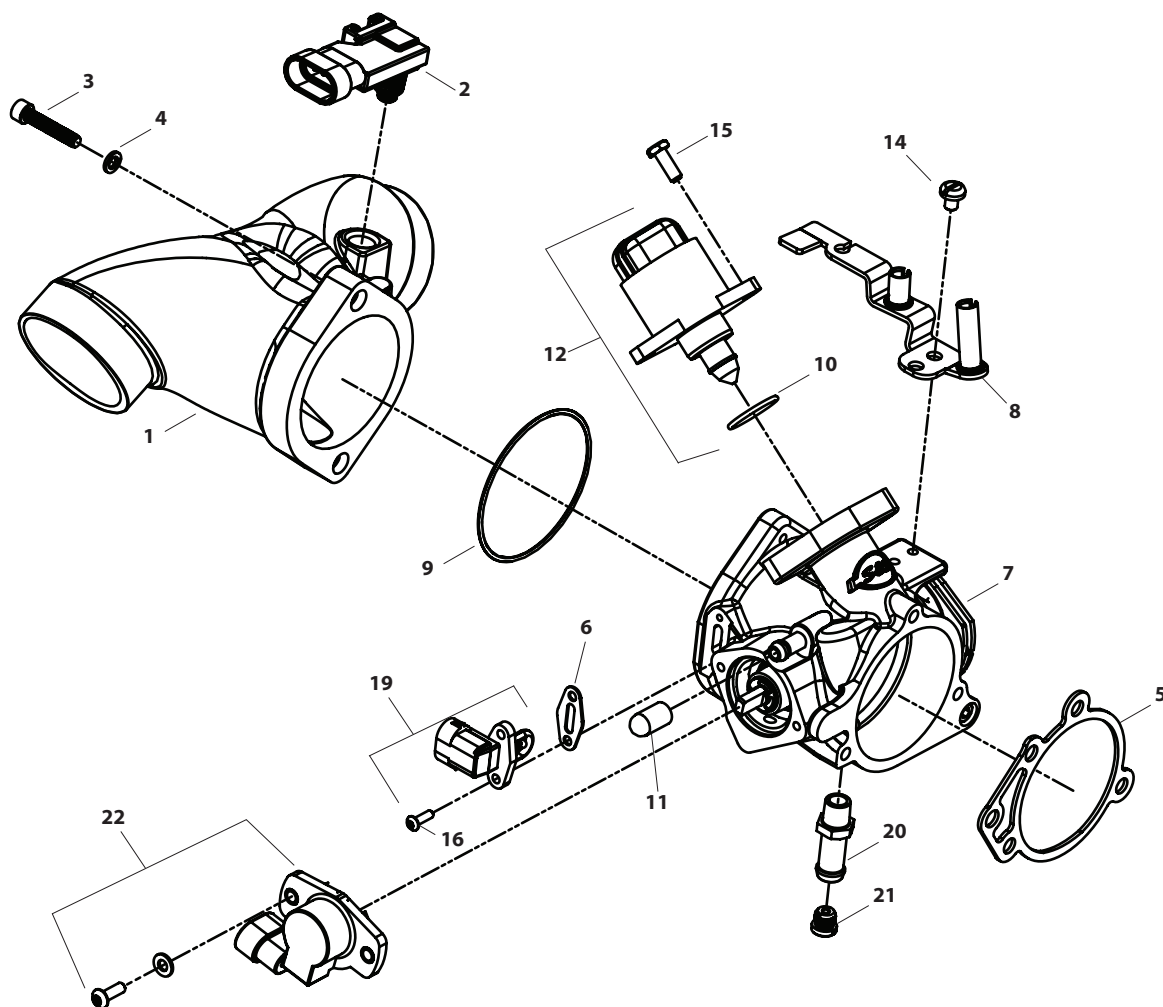
106-1438

X-Wedge® Noise Reduction Air Cleaner

± ⚠ WARNING: Cancer and Reproductive Harm — www.P65Warnings.ca.gov

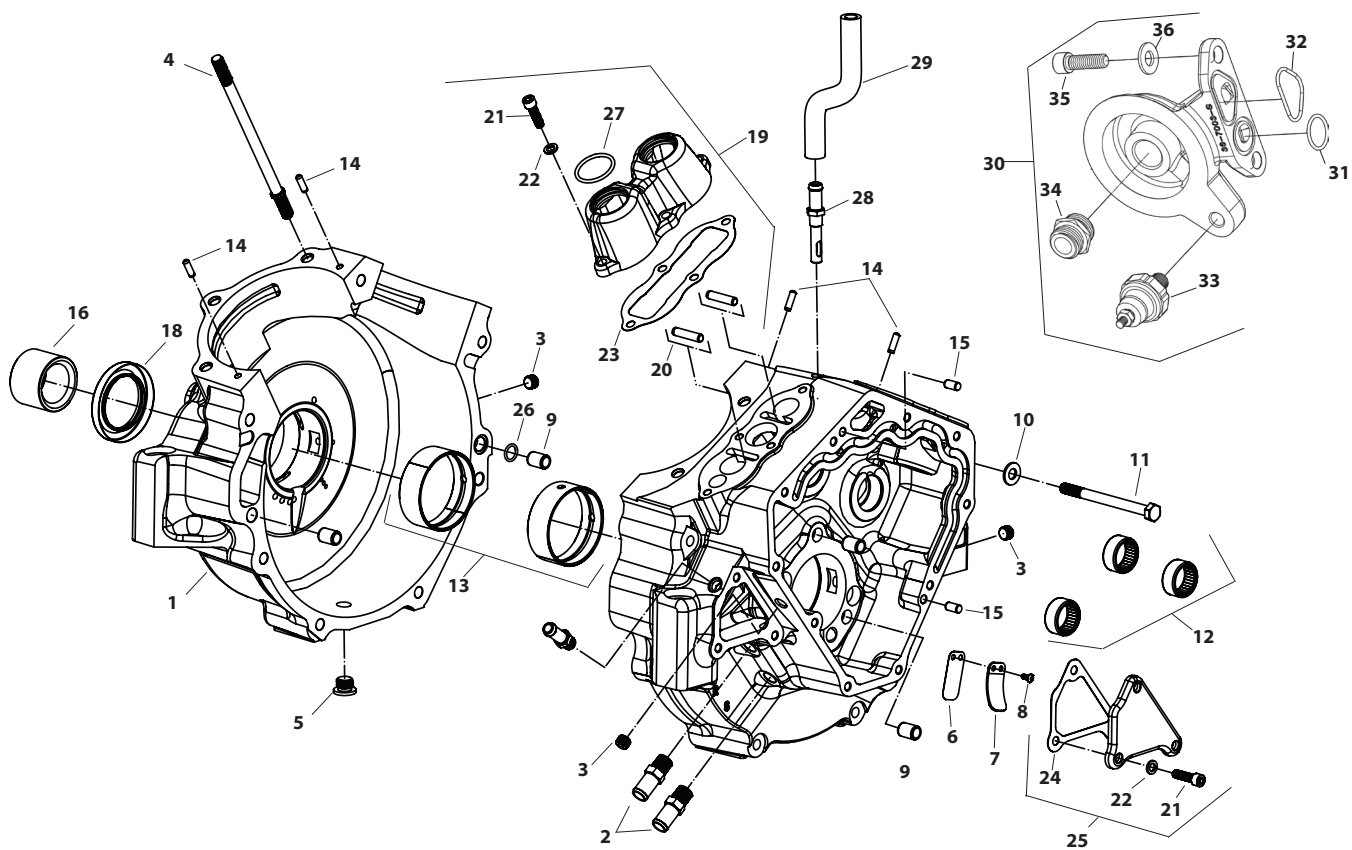
THROTTLE BODY AND RELATED REPLACEMENT PARTS

- | | | |
|--|--|----------|
| 1. Manifold, SBEFI, 2 1/4", X-Wedge Natural | 106-0674 | \$167.95 |
| 2. Sensor kit, map, IST, w/VOES fitting | 55-1037 | \$62.95 |
| 3. Screw, SHSC, 10-24 x 1" (each) | 50-0359-S | \$0.95 |
| 4. Washer, lock, .200" x .334" x .047", zinc, steel | 50-7000 | \$0.95 |
| 5. Gasket, backplate, Super E & G 52mm (each) | 106-1724 | \$3.95 |
| 10 pack | 106-2328 | \$26.95 |
| 58mm | 106-4662 | \$5.95 |
| 6. Gasket, Air Temperature Sensor, S&S® VFI | 16-5009-S | \$4.95 |
| 7. Throttle body, assembly, single bore, w/tps, natural 52mm | 106-3141 | \$314.95 |
| 58mm | 106-3960 | \$314.95 |
| 8. Guide, throttle cable, w/hardware, X-Wedge | 106-0634 | \$52.95 |
| 9. O-ring, (-036), 2.364" ID x 2.504" OD, nitrile | 50-7967-S | \$2.95 |
| 10. O-ring, (-018) .739" ID x .879" OD x .070, viton | 50-8149-S | \$2.95 |
| 11. Cap, canister purge fitting (each) | 50-8266-S | \$5.95 |
| 12. Motor, kit, idle air control, EFI | 55-5085± | \$95.95 |
| 14. Screw, SLTD, PH, 10-24 x 1/4 (each) | 50-0041± | \$2.95 |
| 10 pack | 50-0062 | \$4.95 |
| 15. Screw, 10-24 x .500 trimmed HXHD m/s (each) | 50-0356-S | \$0.95 |
| 16. Screw, torx, m3 x 10mm, zinc, steel | 50-0357-S | \$0.95 |
| 19. Sensor, kit, temperature, intake air | 55-5041 | \$18.95 |
| 20. Fitting, hose, straight, 1/8-27 NPTF x .375", w/ 3/16 T, zinc, steel each | 106-2981± | \$11.95 |
| 21. Jet, Main, Series 72, .100" (each) | 11-4100 | \$9.95 |
| 5 pack | 11-7250 | \$38.95 |
| 22. Throttle position sensor VFI with hardware 27271-95 |  55-5058 | \$93.95 |



CRANKCASE REPLACEMENT PARTS

| | | |
|--|-------------------|----------|
| 1. Crankcase Set - See page 5 | | |
| 2. Fitting, pipe, straight ¼-18 NPTF x 1.510 x ½, zinc | 50-8158-S | \$7.95 |
| 3. Plug ⅜-27 NPT with taper (each) | 50-8331A | \$2.95 |
| 10 pack | 50-1015 | \$10.95 |
| 4. Stud, cylinder base, 6.68", black oxide (each) | 31-2321-S | \$5.95 |
| 8 pack | 31-2321 | \$37.95 |
| 5. Transmission crankcase drain plugs with o-ring | | |
| Plug, magnetic, SH, ½-20 | 50-8335 | \$12.95 |
| 6. Reed, breather valve, X-Wedge | 36-7031 | \$4.95 |
| 7. Stop, breather reed valve, X-Wedge | 36-7032 | \$4.95 |
| 8. Screw, BHS, 6-32 x ¾", stainless steel | 50-0060-S | \$2.95 |
| 9. Pin, dowel, .438 diameter x .610 (each) | 50-8177 | \$3.95 |
| 4 pack | 50-8177-4 | \$10.95 |
| 10. Washer, flat, ⅝ x 1⅛ x ⅛ | 50-7034 | \$0.95 |
| 11. Screw, HHCS, ⅝-18 x 3¾, zinc | 50-0011 | \$2.95 |
| 12. Bearing, assembly, inner, needle, cam, 1999-up BT | 31-4080 | \$11.95 |
| 13. Bearing, main journal, standard, plain | 34-8640-S | \$16.95 |
| 14. Dowel pin, .187" x .635" (each) | 50-8031 | \$2.95 |
| 15. Dowel pin, ¼" x ½" (each) | 50-8022 | \$3.95 |
| 2 pack | 50-8022-2 | \$8.95 |
| 5 pack | 50-8105 | \$8.95 |
| 16. Spacer, charging system, 1.75" x 1.25" | 106-0736 | \$29.95 |
| 17. Fitting, pipe, straight, male, chrome, steel, | | |
| ⅜-27 NPTF x 1.344" x .375" (each) | 50-8129-S* | \$7.95 |
| 18. Left main bearing oil seal 1970-up BT (each) | 31-4010 | \$8.95 |
| 5 pack | 31-4110 | \$17.95 |
| Main bearing oil seal, X-wedge® engines for Morgan® | 500-0132 | \$41.95 |
| 19. Tappet cover, set, X-Wedge | | |
| Polished | 106-0745 | \$146.95 |
| Silver | 106-0746 | \$130.95 |
| Wrinkle black | 106-0747 | \$130.95 |
| 20. Pin, dowel, .250" x 1.125" | 50-8287 | \$2.95 |
| 21. Screw, SHCS, ¼-20 x ⅞" | | |
| Bright zinc | 50-0025 | \$0.95 |
| Chrome | 106-0534* | \$3.95 |
| 22. Washer, flat, .260" x .425" x .060", chrome, steel (each) | 50-7017* | \$2.95 |
| 12 pack | 50-7013* | \$7.95 |
| 23. Gasket, tappet cover, X-Wedge (each) | 37-0006 | \$7.95 |
| 24. Gasket, reed pocket, X-Wedge (each) | 36-0097 | \$9.95 |
| 25. Cover, reed pocket, X-Wedge | | |
| Polished | 106-0597 | \$59.95 |
| Silver | 106-0598 | \$46.95 |
| Wrinkle black | 106-0599 | \$51.95 |
| 26. O-ring, oil feed line (-13), .437" I.D. x .565" O.D., Viton® | | |
| each | 50-8008 | \$2.95 |
| 10 pack | 50-8078 | \$9.95 |
| 27. O-ring, bottom, pushrod tube (-122), 1.112" I.D. Viton | 50-7964-S | \$2.95 |
| 28. Fitting, hose, straight, ⅜-27 NPTF x .500 | 50-8218-S | \$42.95 |
| 29. Hose, vent, breather, .375" x .625" | 106-3011 | \$4.95 |
| 30. Bracket, oil filter, X-Wedge | | |
| Polished | 106-0572 | \$115.95 |
| Silver | 106-0573 | \$104.95 |
| Wrinkle black | 106-0574 | \$104.95 |
| 31. O-ring, Viton, -017 | 50-0466 | \$2.95 |
| 32. O-ring, Viton, size -022 (each) | 50-8005 | \$2.95 |
| 33. Switch, oil pressure, X-Wedge | 106-0744 | \$26.95 |
| 34. Fitting, straight, ¾-16 UNF 2a | 50-8197-S | \$12.95 |
| 35. Screw, SHC, ⅝-18 x 1, zinc | 50-0101 | \$0.95 |
| 36. Washer, flat, ⅝ x 1⅛ x ⅛, zinc, steel | 50-7034 | \$0.95 |
| NOT SHOWN: | | |
| Crank position sensor | 106-0734 | \$100.95 |



CYLINDER HEAD REPLACEMENT PARTS

1. Head, kit, .585", SW steel, X-Wedge
 - Full polished..... **106-0644** \$1,679.95
 - Silver..... **106-0646** \$1,259.95
 - Wrinkle black..... **106-0647** \$1,259.95
2. Valve
 - Intake, 2" x 4.450", @ 1.943" gauge..... **90-2000** \$28.95
 - Exhaust, 1.605" x 4.428", @ 1.509" gauge..... **90-2001** \$63.95
3. Valve seat
 - Intake, 2.000"..... **90-2002** \$23.95
 - Exhaust, 1.605"..... **90-2003** \$54.95
4. Valve guide, intake/exhaust..... **106-2162** \$15.95
5. Head bolt, kit, S&S heads, w/washer, 12 pt
 - $\frac{3}{8}$ -16 x 1.940" x .950" TD..... **93-3028** \$10.95
6. Washer, .515" x .900" x .150"..... **50-0418-S** \$4.95
7. Gasket, exhaust, stainless steel (each)..... **106-5029** \$4.95
 - 10 pack..... **93-1072** \$47.95
8. Exhaust port stud $\frac{5}{16}$ " x 1.7" (each)..... **50-0493** \$2.95
 - 5 pack..... **50-1028** \$13.95
9. Screw, SHCS, $\frac{5}{16}$ -18 x 1", zinc..... **N/A** -
10. Bolt, mounting, HH, grade 5, $\frac{5}{16}$ -18 x 1", zinc (each)..... **50-0108** \$2.95
11. Washer, flat, .344" x .688" x .065", zinc..... **50-7034** \$0.95
12. Flange, manifold, X-Wedge (each)..... **16-0150** \$21.95
13. Seal, manifold, 2.060" x 2.285" x .0240" (each)..... **16-6601** \$13.95
 - 10 pack..... **106-0676** \$125.95
14. Sensor, kit, knock, IST, w/o bracket..... **N/A** -
15. Sensor, temperature, cylinder head, $\frac{4}{8}$ "..... **55-1014** \$167.95
16. Gasket, head, .043", graphite
 - $\frac{4}{16}$ "..... **93-1130** \$12.95
 - $\frac{4}{14}$ "..... **93-1131** \$23.95
 - $\frac{4}{8}$ "..... **93-1132** \$41.95
17. O-ring, (-220), 1.375" ID x 1.625" OD, viton (each)..... **50-8245-S** \$3.95
18. Pushrod cover, set, X-Wedge..... **106-0698** \$87.95
19. Stud, $\frac{5}{16}$ -24, $\frac{7}{16}$ -14 x 2.44" (each)..... **50-0497** \$5.95
20. Retainer, Set, alignment, rocker arm support..... **106-0730** \$42.95
21. Rocker arm, set, X-Wedge..... **106-0716** \$61.95
22. Nut, Lock, HH, Gr8, $\frac{5}{16}$ -24 x $\frac{17}{64}$ ", Zinc Plated, Steel (each)..... **106-1749** \$2.95
23. Washer, flat, .344" x .688" x .065", zinc..... **50-7034** \$0.95
24. O-ring, bottom, injector, .310" ID x .580" OD..... **50-8265-S** \$3.95
25. Fuel injector, assembly, style B, 31.3lbs/hr@58psi..... **55-5005** \$104.95
26. O-ring, top, injector, .290" ID x .570" OD..... **50-8264-S** \$3.95
27. Insulator, hold down, fuel injector (each)..... **106-1303** \$2.95
28. Clamp, front, hold-down, fuel injector..... **106-0578** \$66.95
30. Screw, SHC, $\frac{1}{4}$ -20 x $\frac{7}{8}$, zinc..... **50-0025** \$0.95
31. Valve, bleed, $\frac{1}{16}$ -27 NPT..... **N/A** -
32. Fuel line, cut to size, $\frac{5}{16}$ " x 12", black, rubber (each)..... **106-0159** \$14.95
33. Fuel line, cut to size, $\frac{5}{16}$ " x 2.250", black, rubber (each)..... **106-0157** \$8.95
34. Clamp, Hose, Stepless® Ear, 15.3mm..... **106-2250** \$3.95
35. Fitting, hose, tee, $\frac{5}{16}$ ", black, glass filled, nylon (each)..... **106-0409** \$4.95
36. Rocker Cover Gasket (each)..... **39-0010A** \$20.95
 - 2 pack..... **106-0622** \$31.95
37. Rocker Cover (includes cover screw, washers and gasket(s))
 - Front or Rear..... **106-0600** \$262.95
 - Set..... **106-0593** \$472.95
38. Washer, Flat, .319" x .545" x .042", Zinc Steel (each)..... **50-7026** \$2.95
39. Screw, SHC, 5/16-18 x 1-7/8" Polished Chrome (10 pack) **106-1058±** \$69.95

.585" Lift Street Performance Valve Springs

40. Spring, valve, Sidewinder .585"..... **900-0444** \$28.95
41. Collar, top, valve spring, .585", steel..... **900-0550** \$9.95
42. Valve seal (4 pack)..... **900-0737** \$9.95
43. Collar, Bottom..... **900-0600** \$7.95
44. Valve keeper (each)..... **90-2094-S** \$3.95
 - 8 pack..... **50-7166** \$20.95
45. Shim (for rebuild only)
 - .015" (each)..... **90-2086** \$2.95
 - 5 pack..... **50-7161** \$5.95
 - .030" (each)..... **90-2087** \$2.95
 - 5 pack..... **90-2198** \$7.95

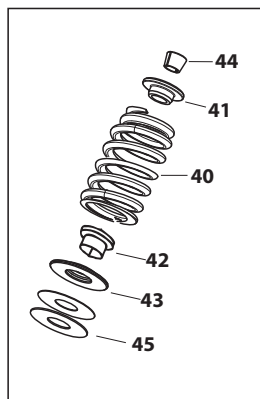
.650" Lift Sidewinder® Valve Springs

46. Spring, Valve .650" (each)..... **106-5689** \$52.95
 - (set of 4)..... **106-5927** \$146.95
47. Collar, Top, Steel..... **106-5690** \$13.95
48. Collar, Bottom, Steel..... **106-3827** \$14.95
49. Valve Keeper
 - each..... **90-2094-S** \$3.95
 - 8 pack..... **50-7166** \$20.95
50. Shim
 - .015" (each)..... **500-0013** \$2.95
 - .030" (each)..... **500-0014** \$2.95

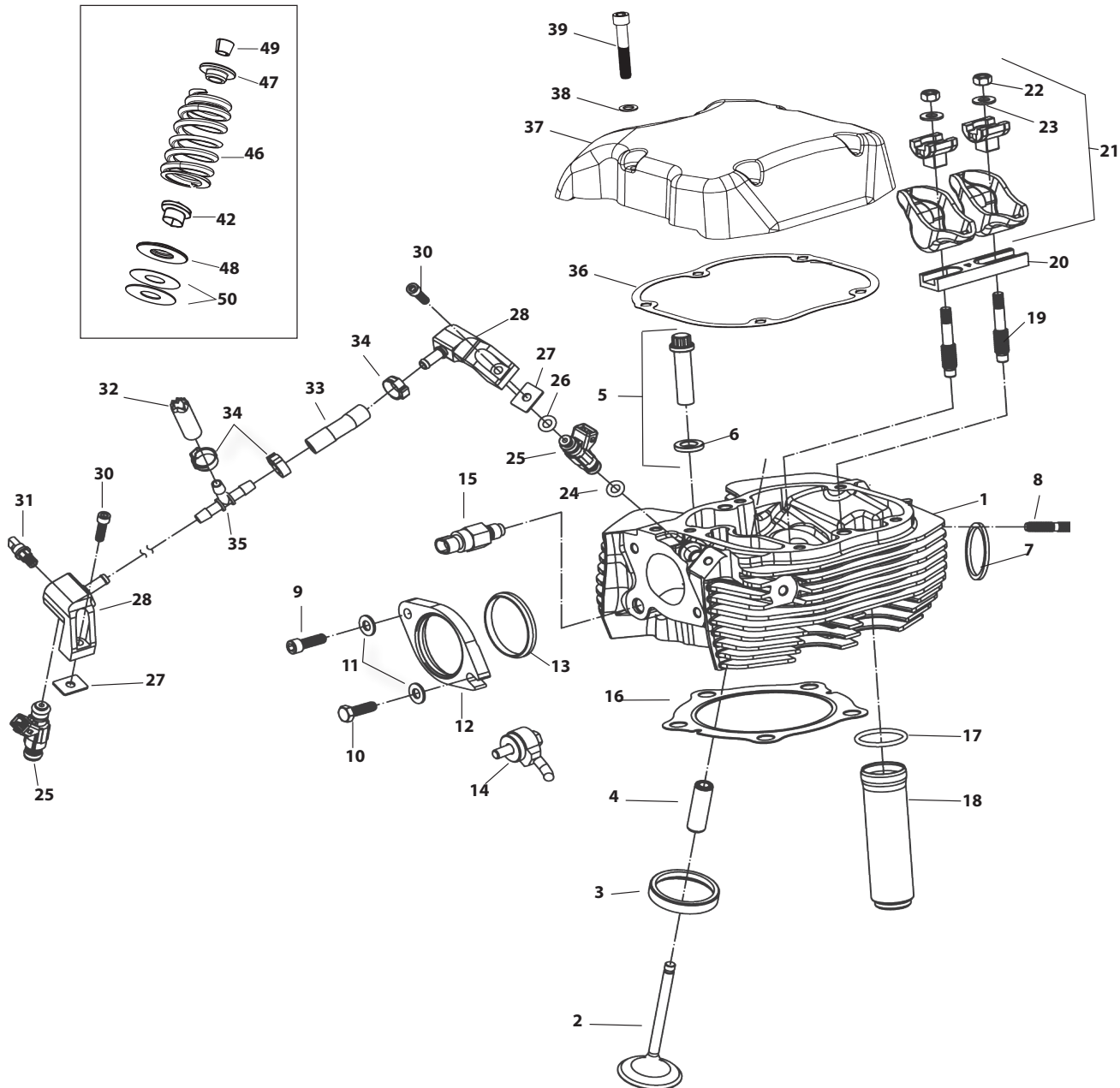
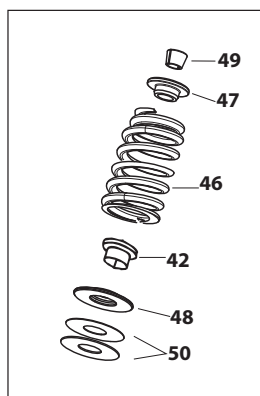
GASKET KITS

| Description | Bore Size | Part # | MSRP |
|-----------------------------|------------------|-----------------|----------|
| Top End Rebuild Kit | $\frac{4}{16}$ " | 90-9701 | \$157.95 |
| | $\frac{4}{8}$ " | 106-1262 | \$136.95 |
| Complete Engine Rebuild Kit | $\frac{4}{8}$ " | 106-1030 | \$209.95 |
| | $\frac{4}{14}$ " | 106-1029 | \$209.95 |
| | $\frac{4}{8}$ " | 106-1031 | \$209.95 |

.585" Lift Street Performance Valve Springs



.650" Lift Sidewinder® Valve Springs





S&S® Cycle, Inc.
14025 Cty Hwy G
Viola, WI 54664 USA
Phone: 608-627-1497
Email: sscust@sscyle.com
sscyle.com

